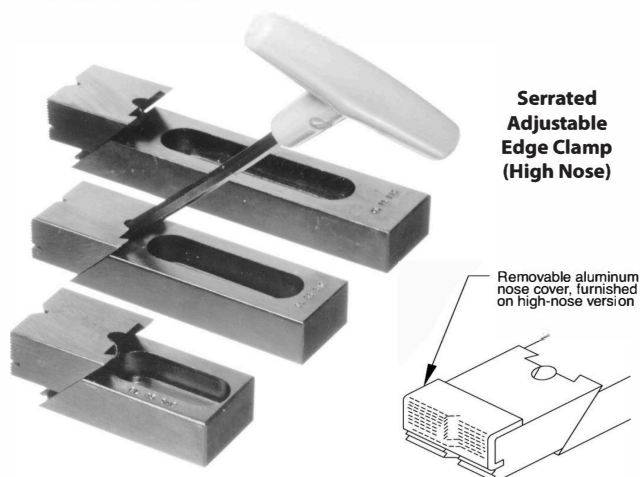
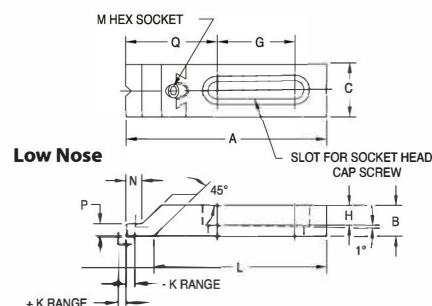
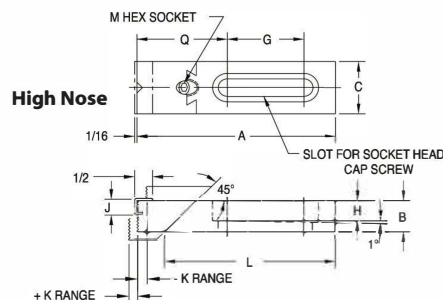


## SERRATED EDGE CLAMPS

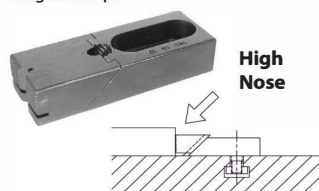
BODY AND NOSE: 1018 STEEL, CASE HARDENED, BLACK OXIDE FINISH  
CLAMPING SCREW: 4140 STEEL, HEAT TREATED RC 43-45, BLACK OXIDE FINISH  
NOSE COVER: ALUMINUM



**Serrated Adjustable Edge Clamp (High Nose)**

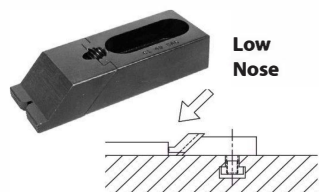


This low-profile clamp is ideal for gripping the side of a workpiece to keep the top clear for machining. Clamps both forward and down simultaneously, by tightening the socket-head screw in the sliding nose with a hex wrench. V-groove in nose is excellent for clamping round parts or corners. Choice of five sizes, each available in several slot lengths. Slot is tapered to prevent the clamp from backing off under heavy forces. Use two mounting screws on longer clamps.



**High Nose**

High-nose version is best for most applications. Gripping high up on the workpiece, close to the machining plane, provides maximum clamping rigidity. A removable aluminum nose cover is furnished for clamping soft or machined parts without damage.



**Low Nose**

Low-nose version is ideal for thin parts, with its extra machining clearance.

### ADJUSTABLE — HIGH NOSE

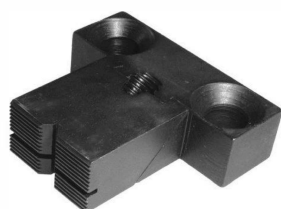
PART NO.	MOUNTING SCREW SIZE	A	B	C	G	H	J	K	L	M	N	P	Q
CL-1-SAC	5/16-18 or M8	2-3/32	5/8	1	1/4	9/32	7/16	1/4	1-9/16	5/32	—	—	1-1/2
CL-5-SAC		3-1/32			1-1/4				2-1/2				1-7/16
CL-15-SAC		3-3/32			13/16				2-15/32				1-13/16
CL-25-SAC	3/8-16 or M10	4-5/32	5/8	1-1/4	1-7/16	3/8	7/16	1/4	3-17/32	3/16	—	—	2
CL-35-SAC		5			2-1/8				4-3/8				1-29/32
CL-45-SAC		4-5/32			1-1/4				3-7/32				2-7/16
CL-55-SAC	1/2-13 or M12	5-21/32	7/8	1-1/2	2-1/8	1/2	5/8	5/16	4-23/32	1/4	—	—	2-11/16
CL-65-SAC		7-1/4			3				6-5/16				2-11/16
CL-75-SAC		5-7/16			1-3/8				4-15/32				3-1/4
CL-95-SAC	5/8-11 or M16	8-7/32	1-1/4	1-3/4	4	5/8	3/4	5/16	7-1/4	5/16	—	—	3
CL-105-SAC		5-7/16			1-3/8				4-15/32				3-9/32
CL-125-SAC		8-7/32			4				7-1/4				3

### ADJUSTABLE — LOW NOSE

CL-0-SAC	5/16-18 or M8	2-3/32	5/8	1	1/4	9/32	—	1/4	1-9/16	5/32	1/8	1/8	1-1/2
CL-00-SAC		3-1/32			1-1/4				2-1/2				1-7/16
CL-10-SAC		3-3/32			13/16				2-15/32				1-13/16
CL-20-SAC	3/8-16 or M10	4-5/32	5/8	1-1/4	1-7/16	3/8	—	1/4	3-17/32	3/16	1/4	1/4	2
CL-30-SAC		5			2-1/8				4-3/8				1-29/32
CL-40-SAC		4-5/32			1-1/4				3-7/32				2-7/16
CL-50-SAC	1/2-13 or M12	5-21/32	7/8	1-1/2	2-1/8	1/2	—	5/16	4-23/32	1/4	1/4	1/4	2-11/16
CL-60-SAC		7-1/4			3				6-5/16				2-9/32
CL-70-SAC		5-7/16			1-3/8				4-15/32				3-1/4
CL-90-SAC	5/8-11 or M16	8-7/32	1-1/4	1-3/4	4	5/8	—	5/16	7-1/4	5/16	5/16	3/8	3
CL-100-SAC		5-7/16			1-3/8				4-15/32				3-1/4
CL-120-SAC		8-7/32			4				7-1/4				3

## SERRATED EDGE CLAMPS

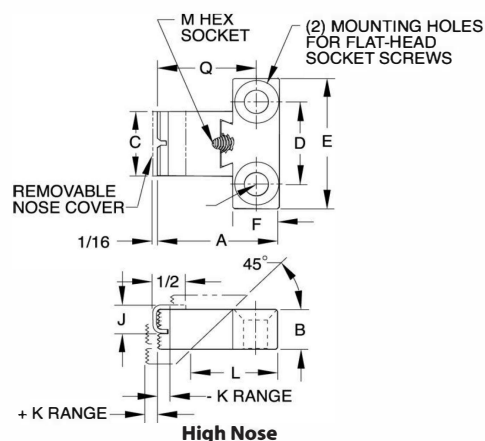
BODY AND NOSE: 1018 STEEL, CASE HARDENED, BLACK OXIDE FINISH  
CLAMPING SCREW: 4140 STEEL, HEAT TREATED RC 43-45, BLACK OXIDE FINISH  
NOSE COVER: ALUMINUM



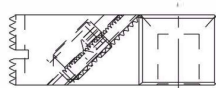
**Serrated  
Fixed  
Edge Clamp  
(High Nose)**



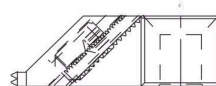
**Serrated  
Fixed  
Edge Clamp  
(Low Nose)**



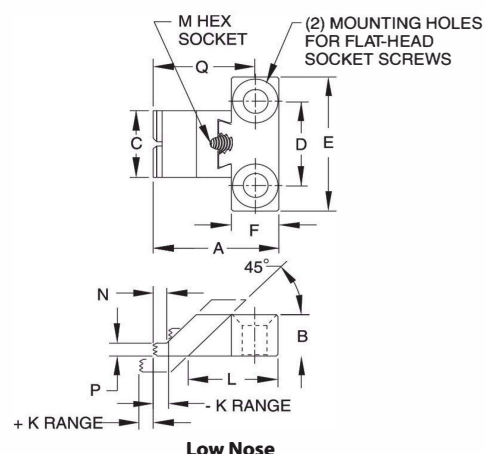
Serrated Fixed Edge Clamps mount in a fixed position, rather than having a slot for adjustment. This makes the clamps more compact and ensures that they are mounted in the correct location without requiring adjustment. The fixed version is usually better for permanent fixtures, while the adjustable version is better for machine-table mounting. The Flat-Head Socket Screws used for mounting absolutely hold proper location (order separately). Choice of three clamp sizes, with either a high nose or low nose.



**High Nose**



**Low Nose**



### FIXED POSITION — HIGH NOSE

PART NO.	MOUNTING SCREW SIZE	A	B	C	D	E	F	J	K	L	M	N	P	Q
CL-5-SFC	5/16-18	1-27/32	5/8	1	1	1-3/4	11/16	7/16	1/4	1-5/16	5/32	—	—	1-1/2
CL-45-SFC	1/2-13	2-25/32	7/8	1-1/2	2	3	31/32	5/8	5/16	1-27/32	1/4	—	—	2-9/32
CL-75-SFC	5/8-11	3-7/16	1-1/4	1-3/4	2	3-1/4	1-1/4	3/4	5/16	2-1/2	5/16	—	—	2-13/16

### FIXED POSITION — LOW NOSE

PART NO.	MOUNTING SCREW SIZE	A	B	C	D	E	F	J	K	L	M	N	P	Q
CL-0-SFC	5/16-18	1-27/32	5/8	1	1	1-3/4	11/16	—	1/4	1-5/16	5/32	1/8	1/8	1-1/2
CL-40-SFC	1/2-13	2-25/32	7/8	1-1/2	2	3	31/32	—	5/16	1-27/32	1/4	1/4	1/4	2-9/32
CL-70-SFC	5/8-11	3-7/16	1-1/4	1-3/4	2	3-1/4	1-1/4	—	5/16	2-1/2	5/16	5/16	3/8	2-13/16